



## Contents

The following Help Topics are available:

[Movie Player basics](#)

[Playing a movie](#)

[Playing more than one movie](#)

[Copying a movie frame to the clipboard](#)

[Using the Edit Options dialog](#)

[The keyboard interface](#)

[Glossary](#)

For Help on Help, Press F1

## Glossary of terms

Animation

Control bar

Frame

Images

Movie

Play bar

QuickTime movie

Selection

Slider

Video

## **Movie Player basics**

[About movies and Movie Player](#)

[Quick Start: Opening and playing movies](#)

[Controls in the movie window](#)

[Getting information about a movie](#)

[Printing in Movie Player](#)

[Copying a movie frame to the clipboard](#)

[Glossary](#)

## Playing a movie

[Opening a movie](#)

[Playing and stopping a movie](#)

[Stepping forward or backward](#)

[Changing the movie window size](#)

[Controlling the volume](#)

[Closing a movie](#)

[Checking a movie's size](#)

[Checking a movie's running time](#)

[Controls in the movie window](#)

[Getting information about a movie](#)

[Glossary](#)

## **About movies and Movie Player**

### **What is a QuickTime movie ?**

A QuickTime movie is a file that can contain video images, animation and sound.

Movies that contain video or animation are made up of a series of still images played in succession. Each image is called a frame.

Many programs let you play QuickTime movies in ordinary documents such as word-processing files, spreadsheets and presentations.

### **Use Movie Player to Open and play QuickTime movies.**

You can play QuickTime movies from your hard disk or from a CD-ROM disc. Movies on floppy disks should be copied to your hard disk before you play them.

Glossary

## **QuickTime movie**

A QuickTime movie is a file that can contain video images, animation, and sound.

Movies that contain video or animation are made up of a series of still images played in succession. Each image is called a frame.

QuickTime movies are DOS files with the suffix .MOV - for example NEWSREEL.MOV

## **Video**

A series of photographic images that portray an event filmed from life.



## **Animation**

A series of drawn images that portray a moving event.

## **Images**

Photographs, drawings or computer generated visual renderings.

## Quick start: Opening and playing movies

[Opening a movie file](#)

[To start playing a movie](#)

[To stop playing a movie](#)

[To move to a different part of the movie](#)

[To move one frame at a time](#)

[To change the sound volume](#)

[To close a movie](#)

[Glossary](#)

## Opening a movie file

### To open a movie file:

1. Choose Open from the File menu in Movie Player
2. Click a movie in the list of files.
3. Click OK

Glossary

## To start playing a movie

Click the Play button at the left side of the control bar (the button changes to a Pause symbol).

Glossary

## To stop playing a movie

Click the pause button at the left side of the control bar (the button changes to the Play symbol).

Glossary

## **To move to a different part of the movie**

Drag the slider in the play bar to the desired position. The play bar is part of the control bar .

The picture changes as you drag the slider so you can see the corresponding part of the movie.

Using the slider

Glossary

## **To move one frame at a time**

Click the forward step button or the backward step button at the right side of the control bar .

If the movie is playing, it stops and then moves one frame forward or backward.

Glossary



## **To change the sound volume**

Click the speaker icon in the volume control at the left side of the control bar and drag the fader to the desired level.

How to work the fader

The volume control button

Glossary

## To close a movie

Choose Close from the File menu,

or

Double click the System menu button at the top left corner of the movie window

[Glossary](#)

## **Controls in the movie window**

The control bar appears at the bottom of every movie. You use it to control how the movie plays, move to any part of the movie, change the viewing size or control the volume.

You also use the control bar to select parts of the movie.

Using the movie controller: Index

Selecting part of a movie

Resizing the movie

Controlling the volume

Glossary

## **Getting information about a movie**

Choose Get Movie Info from the Movie menu to see statistics about a movie.

[Glossary](#)

## Printing in Movie Player

Choose Print from the File menu to print the contents of the active window. If a movie window is active, the currently displayed frame is printed. Use the Print Setup from the File menu to change the settings for page orientation, size and printing options.

Print is enabled only if the active movie window is stopped. When it is selected, the current frame of the active movie will be printed, using the standard print confirmation dialog. The frame will print at its "actual" size provided it will fit on one page; for example, a movie whose internal data structure labels it as a 72 by 72 pixel, 72 dpi image will be 1 inch by 1 inch on a printed page.

Should the printed frame not fit on one page it will be reduced in size to fit.

[Glossary](#)

## Checking a movie's size

**To determine the movie's size.**

Choose Get Movie Info from the Movie menu.

The File Size shown is the storage size of the movie file on disk.



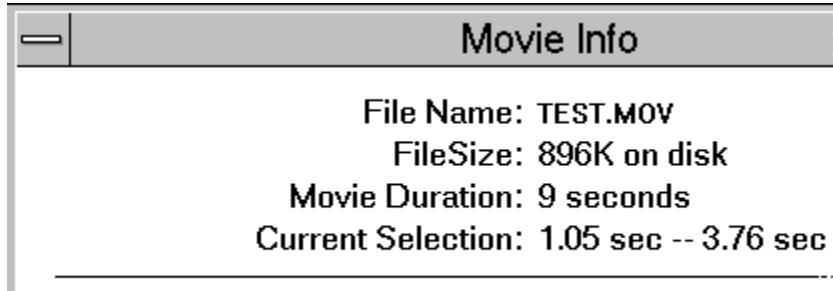
[Glossary](#)

## Checking a movies's running time

**To show the movie's running time:**

Choose Get Movie Info from the Movie menu.

The Movie size figure is followed by the running length in seconds.



[Glossary](#)

## **Copying a movie frame to the clipboard**

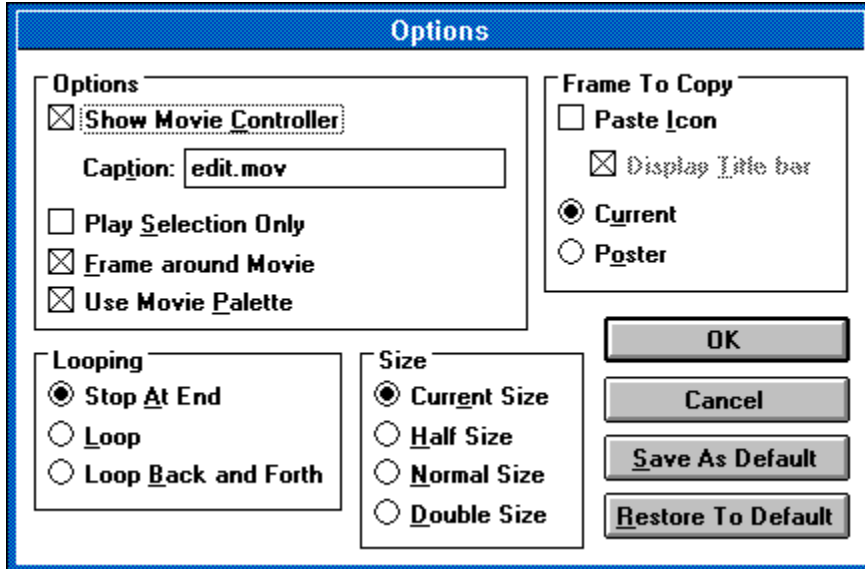
You may copy a frame from the active movie by selecting Copy Frame from the Edit menu. The movie must be paused in order to copy the frame. You may use the Control + C keys from the keyboard to perform the copy or the Control + Insert keys. Only the currently visible frame will be copied to the clipboard. The frame will be copied to the clipboard as a metafile bitmap, a device dependent bitmap, the palette will be copied to the clipboard if the hardware supports palettes and the frame will be copied as a device independent bitmap (DIB) as well.

Glossary



## Using the Edit Options dialog

The options dialog is used primarily to control the behaviour and appearance of a movie embedded in an OLE client document. The dialog is displayed when you select Options from the Edit menu, or when you select the QuickTime Movie Options menu from an appropriate OLE client application.



Most options are self-explanatory. Use the options in the Frame To Copy group to control the appearance of presentation data in the client document.

If Paste Icon is unchecked, either the Current or the Poster frame is used at the size selected. When this frame is double-clicked, the movie will play in place, over the frame.

If Paste Icon is checked, either the Current or Poster frame is placed inside a movie icon. When this icon is double-clicked, the movie plays in a stand-alone window. If Display Title Bar is checked, this stand-alone window has a title bar and can be moved at will. Otherwise, the movie simply plays in the center of the client document.

Use the Save As default button to save a complete set of options as your defaults. Use the Restore To Default button to restore to your last-saved set of defaults.

Glossary

## **Playing more than one movie**

The Movie Player uses the Multiple Document Interface (MDI) convention. This means you may open and play more than one movie at a time. You may choose to play the same movie or different movies. You may iconize movies or arrange them on the screen.

Choose the Window menu option to switch between multiple movies.

Opening a movie file

Glossary



## Movie Controller Index

The following Movie Controller Help Topics are available:

[Playing a movie](#)

[Selecting part of a movie](#)

[Resizing a movie](#)

[The keyboard interface](#)

[The movie control bar](#)

[Glossary of Movie Controller terms](#)

For Help on Help, Press F1

## Playing a movie

[Playing and stopping a movie](#)

[Stepping forward or backward](#)

[Controlling the volume](#)

[The control bar](#)

[Glossary of Movie Controller terms](#)

## Glossary of Movie Controller terms

Backward step button

Control bar

Fader

Forward step button

Frame

Frame rate

Interesting Times

Inactive

Movie

Pause button

Play bar

Play button

Selection

Slider

Step buttons

Volume control button

Window size box

## Playing and stopping a movie

To play a movie press the play button.



### ***The play button***

To pause a movie press the pause button.

When a movie is playing the pause button is in the same place in the movie control bar as the play button.



### ***The pause button***

Glossary of Movie Controller terms

## Stepping forward or backward

[Using the slider](#)

[Using the step buttons](#)

[Using the arrow keys](#)

[Glossary of Movie Controller terms](#)



## Controlling the volume

[The volume control button](#)

[The fader volume control](#)

[Glossary of Movie Controller terms](#)

## The control bar

The control bar is used to control how a movie plays, move to any part of the movie, and control the volume.

### Inactive control bar



### ***The control bar***

### Glossary of Movie Controller terms

## The Movie Controller keyboard interface

The following keys operate the movie controller:

<b>Key</b>	<b>Action</b>
F1	Brings up the Help subsystem at the highest level
Return/Space	Toggles Play/Pause state of <u>movie</u>
Ctrl+Right Arrow	Play movie forward
Ctrl+Left Arrow	Play movie backward
Home	Go to first <u>frame</u> in the movie
End	Go to last frame in the movie
Right Arrow	Step forward one frame in the movie (repeats)
Left Arrow	Step backward one frame in the movie (repeats)
Up Arrow	Increase volume (when sound enabled)
Down Arrow	Decrease volume (when sound enabled)
Shift+Return	Play movie and <u>select</u> while Shift key depressed
Shift+Space	Same as Shift+Return (Play movie and select)
Shift+Right Arrow	Select one frame Stepping forward (repeats)
Shift+Left Arrow	Select one frame Stepping backward (repeats)
Shift+Down Arrow	Clear Selection
Shift+Home	Go to first frame and extend selection
Shift+End	Go to last frame and extend selection
Ctrl+Shift+Home	Go to previous <u>interesting time</u> and extend selection
Ctrl+Shift+End	Go to next interesting time and extend selection
Ctrl+Home	Go to previous interesting time
Ctrl+End	Go to next interesting time

Glossary of Movie Controller terms

## **Movie**

A collection of video and audio data.

## Selection

A portion of a movie you wish to play.



|  
The play bar turns black to show  
the portion you have selected

## The play button

The button that starts the movie playing.



## The pause button

The button that pauses a playing movie.



## Using the slider

You may move forward and backward within a movie by using the slider. The slider may be manipulated by clicking and dragging it with the mouse.



### ***The slider***

[Glossary of Movie Controller terms](#)



## Using the step buttons

You may step forward through the movie one frame at a time by clicking the forward step button with the mouse. This button will repeat if held down. The repeat rate is set in the Windows Control Panel.



### ***The step forward button***

You may step backward through the movie one frame at a time by clicking the backward step button with the mouse. This button will repeat if held down. The repeat rate is set in the Windows Control Panel.



### ***The step backward button***

[Glossary of Movie Controller terms](#)

## The slider

The slider is used to move to a particular frame in the movie.



## Step buttons

Step buttons allow you to step forward or backward in the movie one frame at a time. These buttons repeat if held down.



*Forward*



*Backward*

## Forward step button

The forward step button allows you to step forward in the movie one frame at a time. This button repeats if held down.



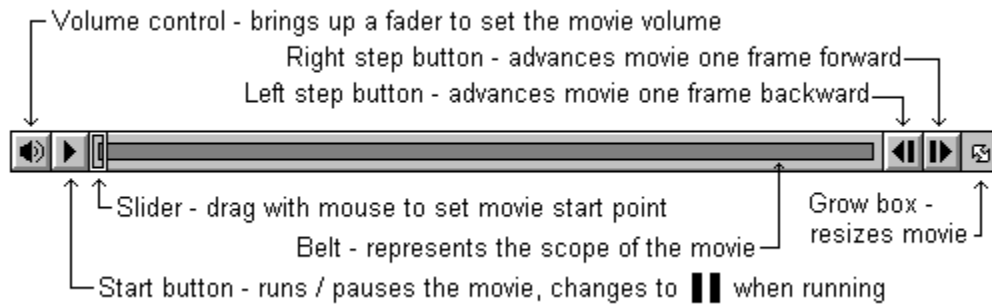
## Backward step button

The backward step button allows you to step backward in the movie one frame at a time. This button repeats if held down.



## Control bar

The interface that controls all aspects of playing a movie.



## The volume control button

The volume control button can tell you if the movie has sound (if the button is grayed there is no sound). If your computer is not capable of producing sound, the volume control button will be grayed with a bar through it.

If you click the volume control button you will be able to adjust the sound level using the fader. You may also use the up and down arrow keys on the keyboard to adjust the volume. The up arrow key increases the volume each time it is depressed. The down arrow key decreases the volume each time it is depressed. The volume control button icon changes to show how loud you have set the movie sound.

Volume control icon values



***The volume control button***

Glossary of Movie Controller terms

## Volume control button

The button that controls movie sound volume. It also shows the volume level and shows if the movie has sound. Click the volume control button to bring up the volume fader. If your computer hardware cannot produce sound the volume control button will be gray with a bar through it.

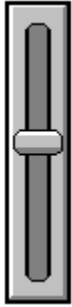




## The fader volume control

The fader allows you to control the volume level for movies that have sound. You get to the fader by clicking the volume control button.

How to work the fader



***The volume fader***

Glossary of Movie Controller terms

## Fader

The fader controls the sound level of a movie. Click and drag the fader up to increase the movie sound volume. Click and drag the fader down to decrease the movie sound volume.



## How to work the fader

Click and drag the fader to change the volume level. Drag up to make the sound louder and down to make the sound softer. Also, the up and down arrow keys on the keyboard can be used to change the sound level. The up arrow key will increase the volume each time it is depressed. The down arrow key will decrease the volume each time it is depressed.



***Maximum sound level***



***Minimum sound level***

[Glossary of Movie Controller terms](#)

## Resizing a movie

The window size box allows you to resize the movie rectangle by clicking and dragging with the mouse. The window size box is at the extreme right side of the control bar and is distinguished by a double-headed arrow.



### ***The window size box***

Glossary of Movie Controller terms

## Window size box

The window size box is at the right of the control bar and allows resizing of the movie.



## The different values in the volume button

The volume control button has several different icons it may display:



The volume is loudest



The volume is medium



The volume is softest



The volume is off



The movie has no sound or there is no sound card

Glossary of Movie Controller terms

## Inactive control bar

The control bar is inactive when it is no longer available to you. An inactive control bar will not respond to mouse clicks or keystrokes.



### *Inactive control bar*

Glossary of Movie Controller terms

## **Inactive**

When the control bar or a pushbutton is inactive it appears light gray and will not respond to mouse clicks or keystrokes.



## Using the arrow keys

By pressing the left arrow key on the keyboard you may move backward one frame in the movie. By pressing the right arrow key on the keyboard you may move forward one frame in the movie. If you hold down either the left or the right arrow keys on the keyboard they will repeat.

By pressing the up arrow key on the keyboard you may increase the volume of the movie. By pressing the down arrow key on the keyboard you may decrease the volume of the movie.

Glossary of Movie Controller terms

## Selecting part of a movie

You may select a portion of a movie. You might do this so that you can play only that selected portion. Hold down the keyboard Shift key and step forward or backward in the movie to make a selection. If you hold down the Shift key then start the movie playing that part of the movie will be selected. The selected portion of the movie will appear darkened on the play bar .

Stepping forward or backward

Clearing a selection



Glossary of Movie Controller terms

**Play bar**



## **Clearing a selection**

You may clear the selection of a part of a movie by pressing the Shift and Down Arrow keys on the keyboard at the same time.

[Glossary of Movie Controller terms](#)

## Frame

One still image in a movie. Movies containing motion video and animation are made up of a series of frames, played in succession. See also: [Frame rate](#).

## **Frame rate**

The number of frames per second at which a movie is played or recorded. Frame rate does not affect a movie's playing time.

For example, a QuickTime movie recorded at 30 frames per second might play back at 15 frames per second on a slower machine but the movie's total playing time would not change.

## Interesting Times

There are four "interesting" times in a movie, the first frame, the last frame and (only if there is a selection ) the beginning of a selection and the end of a selection. Some keystrokes go to interesting times in the movie. See the keyboard interface for details.



